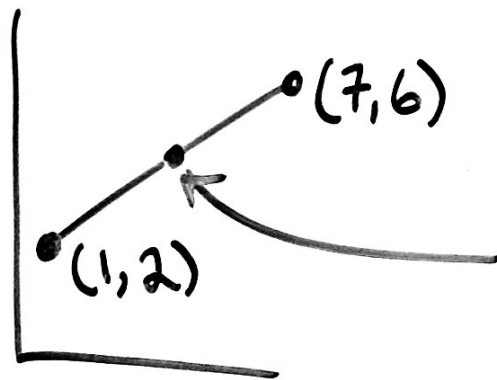


Midpoint of a line segment:

$$\text{midpoint} = \left(\frac{x_1 + x_2}{2}, \frac{y_1 + y_2}{2} \right)$$

ex



$$\text{midpoint} \left(\frac{1+7}{2}, \frac{2+6}{2} \right)$$

$$= \left(\frac{8}{2}, \frac{8}{2} \right)$$

$$= (4, 4)$$